

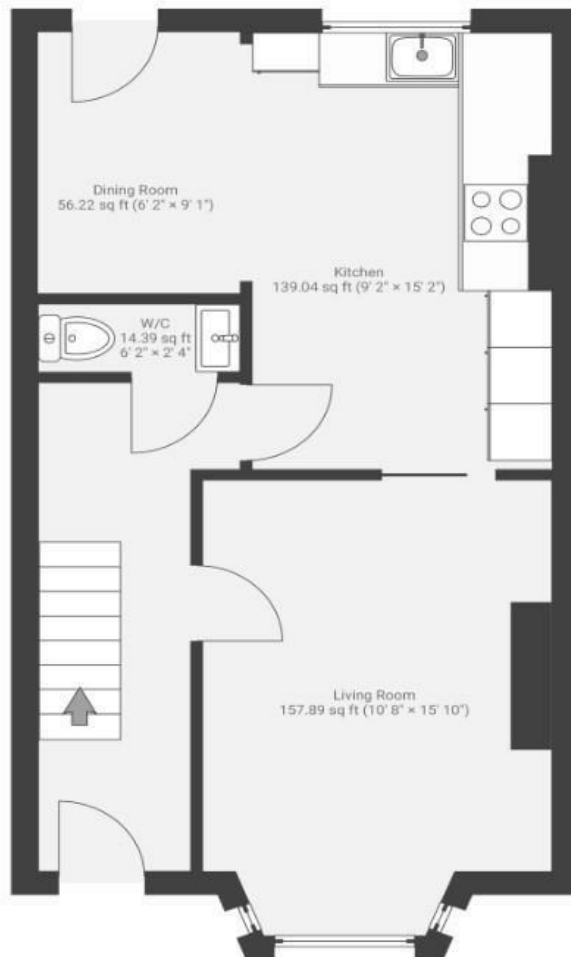
# Henry Street

## TOTTERDOWN

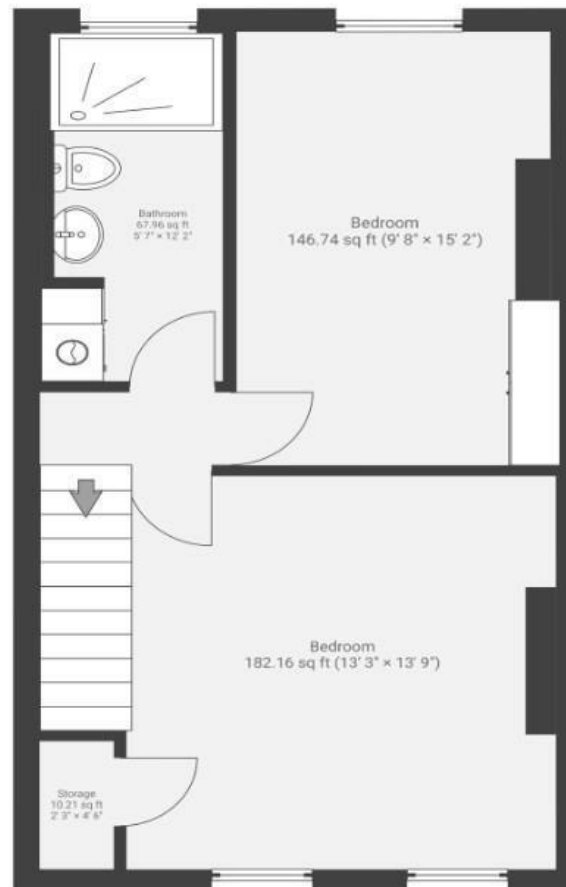
APPROXIMATE FLOOR AREA  
87.0 SQM / 936 SQFT



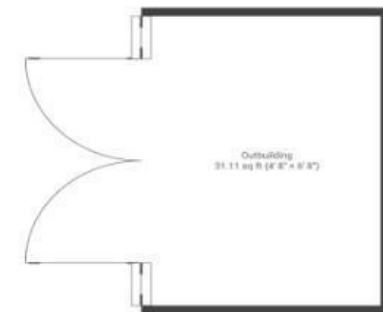
GROUND FLOOR



FIRST FLOOR



EXTERNAL



Illustrations are for reference purposes only, measurements are approximate, not to scale.

Boardwalk

# Henry Street

## TOTTERDOWN, BRISTOL



£400,000



2 Bedrooms



BS3 4UD



2 Bathrooms

*"We spend most evenings in the summer in the garden, and the summer house (our "she shed") is the perfect spot to unwind with a good book. We love relaxing in the cozy sitting room — it gets beautiful afternoon light. We've really enjoyed having the new kitchen, and it's been great for hosting friends for dinner. On weekends, we love walking over to Sundial Kitchen for breakfast, and the Banana Boat nearby is our go-to for fresh fruit and veggies. The neighbours are friendly and welcoming."*

